

What's New?

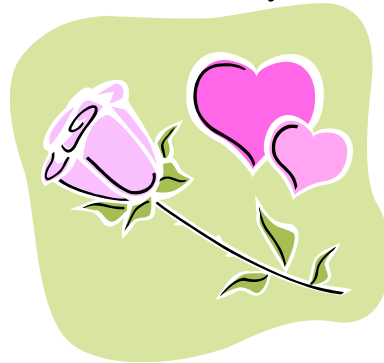
Niihama City

No.198

February 2012

Published by SGG Niihama

2



Valentine's day in Canada

Audrey Anne Daoust

February 14th is nowadays famous around the world as the day to celebrate love. Valentine's Day (or St-Valentin in French) is the name given to that special day. This celebration is very old, and the most reliable explanation goes back to the Antiquity. In fact, Valentine was the name of a Christian priest living in the roman empire who died on February 14th. The emperor at that time wanted a bigger army which he could acquire by recruiting new soldiers. To do this, he forbade wedding, hoping that men without families would become soldier. Despite of this new law, Valentine was still illegally celebrating wedding, a symbol of love. Unfortunately, he was arrested and killed for not following the rule. When the Christian religion became more powerful and popular in Europe, it was decided that love would be celebrated on February 14th, the day Valentine died.

In Canada, it's very popular to have a romantic date with your lover on this day. Even older couple likes to do something special. Typical activities and dates include going to restaurant, going to movie theater or renting a movie, sleeping at the hotel, organizing a day in a spa house, etc. Many people also like to offer a gift on that day too. Chocolates, flowers and jewelry are stereotypes but appreciated. That being said, the important thing is to be with your love one and to do something together. Some parents will even ask someone to babysit

their kids to have a private moment together.

There are also activities in school around this day. In primary schools, teachers will organize some activities in their classroom for the students. Younger kids might colour a picture about love, older ones might have a secret valentine (someone who secretly send them a gift during this day). Some teachers also decorate their class with red, pink and white balloons, with garlands and Valentine themed ornaments. In high schools, students organize their activity. They usually decorate the school. Type of activities depends on the imagination of who plans them. Here are some examples : flower sale, kiss contest, dance party, secret valentine post card service, chocolate making, theater play, cupid tag, etc.

Valentine's day is a pretty big event in Canada. Many stores sell Valentine themed goods. Restaurants sometime prepare special Valentine's day menu for couple. Around this time of the year, you can see lots of advertisements using Valentine's day color (red, pink and white) or love symbols (hearts, couple, cupid, roses, kiss). Even single people like to celebrate this special event by sharing their love to their friends and hanging out together.

In Canada that's how we celebrate this special day. However, Valentine's day shares the same idea all around the world : the concept of love.

Audrey Anne Daoust is from the province of Quebec in Canada. Canada is a bilingual country, which means that people learn two languages at school :English and French. It's now Audrey Anne's third trip to Japan. She lives in the prefecture of Ehime since May 2011. She loves music, cinema, shopping and travelling. She is also learning Japanese and likes to practice it.

You can read on the Web.

***What's New?**

***Garbage and trash Collection Calendar**

***Information living in Niihama**

Click  <http://www.city.niihama.lg.jp/english/>

Clair: ***Multilingual Living Information**

<http://www.clair.or.jp/tagengorev/en/index.html>

Global Party



If you are looking for a party with a lot of fun, please join the Global Party, where you can have a good time talking, tasting various sweets, enjoying performances on stage and meeting people from different cultures.

Date: Sunday, 12th February, 2012-2-9

Time: 13:00-15:30

Venue: Niihama Women's Plaza

Address: 4-4-9 Shonai-cho, Niihama-Shi

[Tel:0897-37-1700](tel:0897-37-1700)

Admission: JPY500/person to be paid at the reception

Free for children of 6-year-old and under

2/11(Sat.)2/25(Sat.)Cycling in Oshima Island

How about cycling on Oshima Island with its abundant nature and culture? All you have to pay is 1000yen to cover lunch and the 15 minutes ferry rides. A guide will accompany you. Be at Kuroshima Port at 10:00.

We will be accepting reservations until 3 days before the each date through this e-mail: yasumi@galaxy.ocn.ne.jp

Exploring Restaurants: Western – style

No. 5

Starbucks

by Michael Newlin

Recently, Starbucks opened at Aeon Mall in Niihama. While it is nice to enjoy the coffee, most exciting are the small pre-made sandwiches and sweets (muffins, cookies, etc) that represent very Western combinations of flavors (e.g., pancetta and manchego cheese panini). Surprising, but tasty for Japanese friends.

Quick and Easy Ways to Make Power Savings in Winter (From the shisei-dayori, January 2012)

The following is a brief reference to a few quick, easy and cost-free power-saving methods for winter time, focusing on "air conditioners, refrigerators, lightning and TVs", which account for 70 percent of household electric power consumption.

✧ **Air conditioner**

Wear thick layers of clothes and set the air conditioner at a room temperature of 20°C.

Saving effect (Power reduction rate) of 7 percent.

✧ **Refrigerator**

Set the refrigerator on the "low" position, minimize the frequency/duration of door opening and the amount of food being stored.

Saving effect (Power reduction rate) of 1 percent.

✧ **Lightning**

Turn off as many un-necessary lights as possible.

Saving effect (Power reduction rate) of 4 percent.

✧ **TV**

Lower the brightness level of the screen and turn off the TV when it is not being watched.

Saving effect (Power reduction rate) of 2 percent.

Handy Goods: Rechargeable Portable Lights

From the Nikei 2011/11/7

The Panasonic Compact Light BG-BL01G is no bigger than a paperback book and has a solar panel in it. It can be used as a light or a battery charger, using electricity generated by solar energy.

Recharging time is approximately 15 hours although it depends on the amount of sunlight it is exposed to.

If you select strong light, it will last for at least 60 hours. Its price is about 6000yen.

Another light, which can be recharged by hand power is the Land Port "Bun Bun Eco-light" LED flash light which weigh only 97 grams.

Wind it up for 30 seconds and you can use its light for 5 minutes.

It is handy because you don't have to worry about batteries. once it is recharged, its light is strong enough to read letters in the dark. It comes in four different colors and costs around 2200yen.

MOVIE

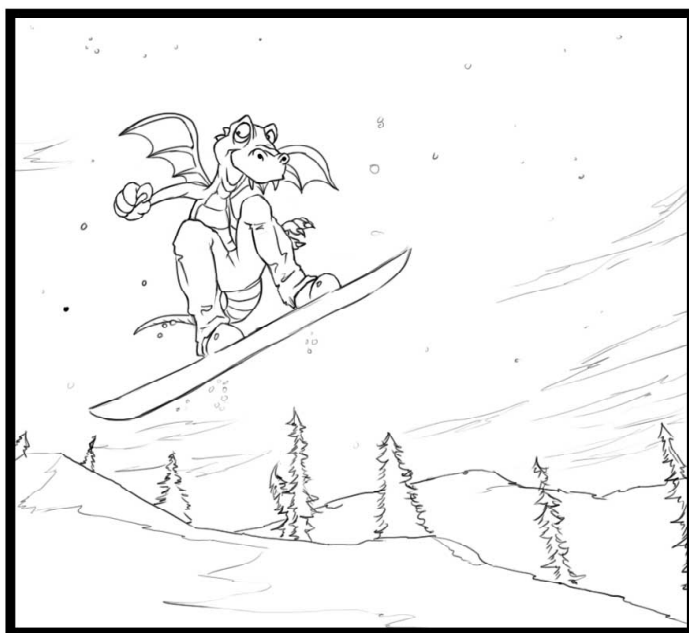
TOHO CINEMAS Niihama (AEON Shopping Center)

December 16 ~ MISSION IMPOSSIBLE-
GHOST PROTOCOL English/Dubbed
January 7 ~ FLIGHT NIGHT 3D English
February 10 ~ THE GIRL WITH
THE DRAGON TATTO English
February 17 ~ IN TIME English/Dubbed
February 18 ~ EXTREMELY LOUD AND
INCREDIBLY CLOSE English

Information Service

Internet: <http://niihama-aeonmall.com>

Tape (24 hrs): 0897-35-3322 (in Japanese)



~ Bring in the Year of the Dragon with some FUN!!

<Contributed by **Adam Schartup**>

SGG would welcome any suggestions, questions or ideas
for monthly articles. email: yukiko-m@shikoku.ne.jp

kasi4386@plum.ocn.ne.jp

sheep@abeam.ocn.ne.jp

*The editors for this month are XXXX & XXXX

ONE POINT JAPANESE

いろいろなオノマトペ

(Various Onomatopoeia)

A : インフルエンザが流行^{はや}って いますね。

Influenza ga hayatte imasu ne.

(Influenza is going around, isn't it?)

B : ええ、うちの 職場^{しよくば}でも 感染^{かんせん}者が どンドン 増えてきました。

Ee, uchino shokuba de mo kansensha ga dondon fuetekimashita .

(Yes. In my office too infected people are increasing rapidly.)

A : どうしたんですか。Doshitan desu ka.

(What's wrong?)

しんどそうですね。Shindoso desu ne.

(You look tired.)

B : きのうから、コンコン 咳^{せき}が でて、とまらないんです。

Kinō kara konkon seki ga dete, tomaranain desu.

(I've had a bad cough since yesterday; it just doesn't stop.)

A : 熱^{ねつ}は? Netsu wa? (Any fever?)

B : 測^{はか}ってないんですが、頭^{あたま}が ポーっと しています。

Hakatte nain desu ga, atama ga botto shiteimasu.

(I haven't taken my temperature, but my head is not clear.)

A : 念^{ねん}のため、測^{はか}って みたら? Nennotame, hakatte mitara?

(Why don't you take your temperature, just in case?)

(熱を測る netsu o hakaru B takes his temperature.)

B : あっ、39度^ども ある!

A、sanjukudo mo aru!

(Ah, it's 39°C!)

何^{なん}だか 急に フラフラして きました。

Nandaka kyū ni furafura shite kimashita.

(I don't know why, but I suddenly feel dizzy.)

A : 早^{はや}く 病^{びょういん}院^いへ 行^いった 方^{ほう}が いいですよ。

Hayaku byōin e itta hōga ii desu yo.

(You had better go to the hospital right away.)

A : 体^{たいちよう}調^{じょう}は どうですか。

Taichō wa dō desu ka.

(How's your physical condition?)

B : 薬^{くすり}が 効^きいて、一^{ひと}晩^{ばん}で 熱^{ねつ}が スーっと 下^さがりました。

Kusuriga kite, hitoban de netsu ga sutto sagarimashita.

(The medicine worked, so my temperature has gone down dramatically.)

A : 咳^{せき}は? Seki wa? (How's your cough?)

B : 咳^{せき}も ピタッと 止^とまりました。

Seki mo pitatto tomarimashita .

(The cough has stopped completely.)

< by Niihama Nihongo no Kai >

NNK also provides Japanese lessons for foreigners living in Niihama.

Feel free to contact us at: Tel 0897-34-3025 (Manami Miki).

e-mail : manami-m@js6.so-net.ne.jp